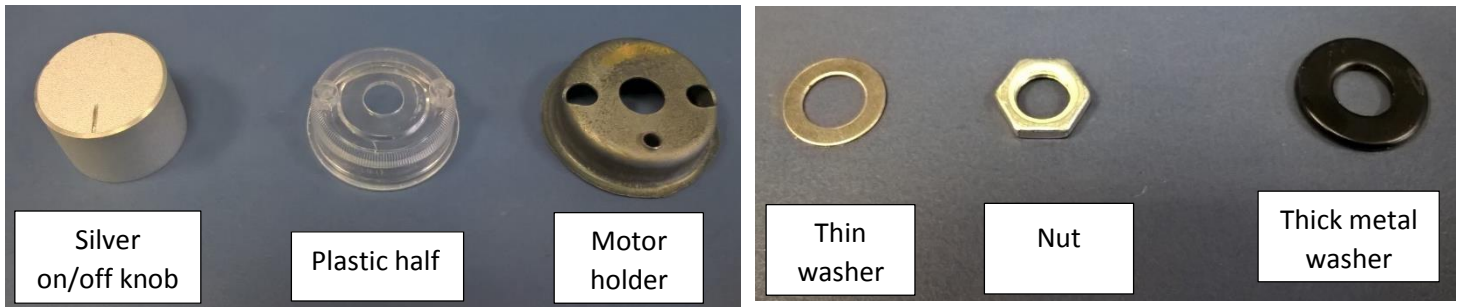
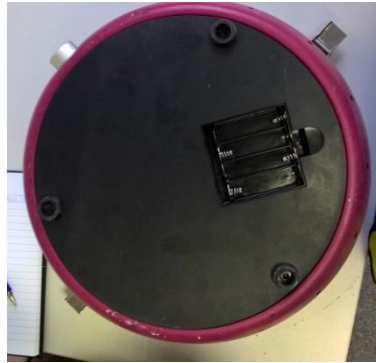


## Replacing Lotus Grill Parts



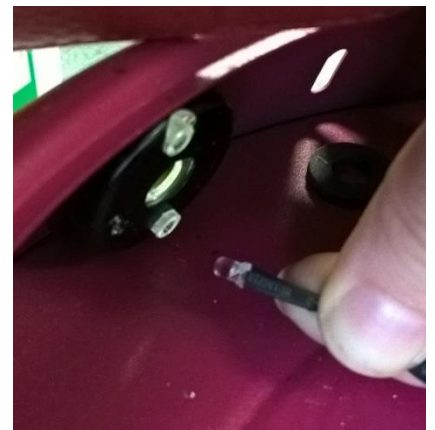
1. Turn your grill upside down and remove the batteries. Unscrew the three feet screws, releasing the black base plate.



2. Pull the silver on/off knob off.

3. Unscrew the nut that was behind the on/off knob and take off thin washer.

4. Pull out the small light that is attached to the motor holder.





5. You should then be able to take off the motor holder, outside plastic half, and motor.

6. Unscrew the fan, but keep the screws.



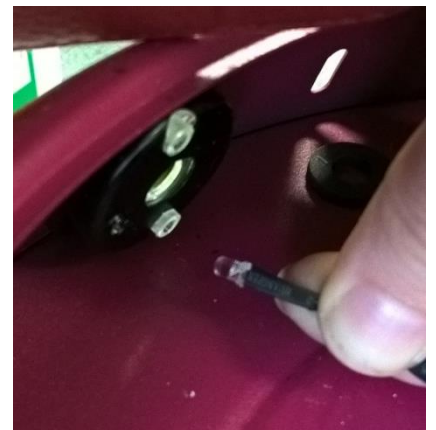
7. When you take out the new replacements, you will need to remove the silver on/off knob as before, as well as the plastic half with the thin washer and nut.

8. Screw on new fan.



9. Place the plastic half on the front of the hole. Put the motor holder on the inside, lining them up to slot into each other.

10. Push the small light into the bottom hole of the motor holder.





11. Slot the motor through the motor holder so it is poking out, making sure the thick metal washer is between the motor and the motor holder (photo is taken with the parts not slotted into the grill to demonstrate).

Thick metal washer is between motor holder and

12. Place thin washer, then the nut on the outside of the plastic half and tighten into place.



13. Replace silver knob.

14. Put black base plate into the base and screw securely, replace batteries.

